

osmógrafo

SUPPORTING CANINE RESCUE TEAMS

The **osmógrafo** is a revolutionary system that uses GPS and meteorological sensors to map canine rescue operations improving the coverage of a disaster scene. By showing the area covered by the dog's olfactory system, the **osmógrafo** helps identify gaps in a search operation, thus improving a person's chances of being found and the efficiency of each search.



GMV
Isaac Newton, 11 P.T.M. Tres Cantos 28760 Madrid SPAIN
1375 Piccard Dr. Suite 250 Rockville MD 20850 USA
www.gmv.com

gmv[®]
INNOVATING SOLUTIONS

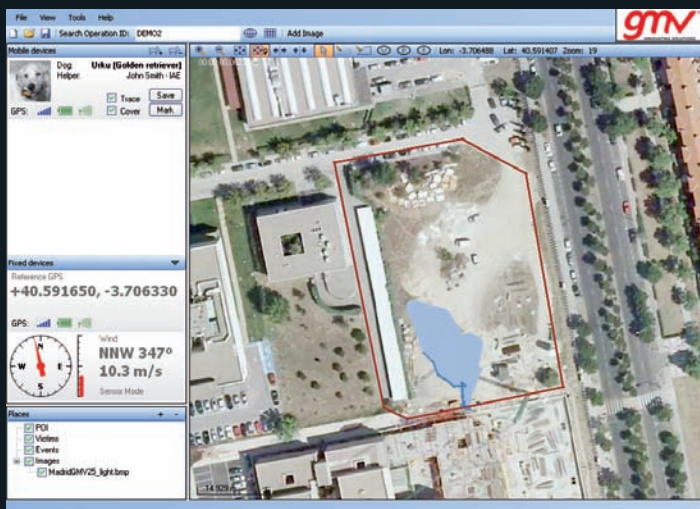
osmógrafa

osmógrafa

- A revolutionary support system for canine search team rescue operations and training
- A satellite navigation based tool that improves the odds that these rescue teams will locate and save people that have become trapped by earthquakes, landslides, avalanches, collapsed buildings, etc., in the shortest possible time
- An innovative system that assists the rescue coordinator in determining whether an area has been fully searched

OPERATIONAL EFFICIENCY AND QUALITY

The **osmógrafa** can improve the efficiency of search operations and reduce the overall time spent searching for survivors while at the same time improving the quality of the search operation. With the **osmógrafa** your team can search the same area, with a higher level of coverage, faster than ever before.



The **osmógrafa** can also be used in training exercises to improve search techniques and coordination. It can then be used after rescue operations to review performances and suggest improvements.

USEFUL FOR OTHER APPLICATIONS

The **osmógrafa** can be applied to many other canine applications, in many other fields. The system can be used to:

- Identify the origin of forest fires
- Locate poisoned bait traps
- Improve drug searches
- Search for truffles in forests and fields
- Pinpoint insect infestations
- Identify the source of leaks in underground pipes

And many more!

FULLY PORTABLE

The **osmógrafa** is operated from a laptop PC with the assistance of a small meteorological device that measures the speed and direction of the wind, an RF communications device and a device for taking reference positions. These elements work in conjunction with the positioning device worn by the search dog to complete the system.



ANIMAL FRIENDLY

The **osmógrafa** is lightweight and compact in order to allow the search dog to operate in tough conditions without endangering the safety of the animal. The collar detaches automatically if it becomes caught on something.



AWARDED BEST PRODUCT

Best Product for Security, Emergency Management, and Road Safety, Spanish National Awards for Safety and Emergency Management, 2nd Edition, 2007

